



CIMAP



**PALPEURS
ET ACCESSOIRES
POUR TOUTES MACHINES
DE MESURES**




**CIMAP****13, av. de la Porte de Champerret
75017 PARIS****TECHNICAL DATA / TECHNISCHE DATEN**

	Material Werkstoff	Form deviation Formabweichung	Diameter precision Durchmesser Präzision	Roughness Rauheit	Hardness Härte Vickers	Thermal expansion Wärmeausdehnung	Density Dichte
Ruby balls Rubinkugeln	Synthetic ruby monocrystalline Synthetischer Rubin monokristallin 99% Al ₂ O ₃ + 1% Cr ₂ O ₃	Ø 0,5 - 5,5 < 0,25 µm Ø 6,0 - 12,7 < 0,5 µm	Ø 0,5 - 5,5 ± 0,25 µm Ø 6,0 - 12,7 ± 0,5 µm	Ra <0,013 µm	2399 HV	5,5 • 10 ⁻⁶ °K ⁻¹	3,99 g/cm ³
Ceramic balls Keramikkugeln	Alumina, polycrystalline Aluminiumoxid, polykristallin >99,9 Al ₂ O ₃	≤ 0,13 µm	0 -0,1 mm	Ra <0,013 µm	2100 HV	8,0 • 10 ⁻⁶ °K ⁻¹	3,97 g/cm ³
Stainless steel Nichtrostender Stahl	Standard no. 1.4305 Norm Nr. 1.4305 DIN X 12 Cr NiS 18 8 AISI 303	Nonmagnetic Nicht- magnetisch	-	Ra ≤ 0,8 µm	- 300 HV	16 • 10 ⁻⁶ °K ⁻¹	7,9 g/cm ³
Tungsten carbide shaft Hartmetallschaft	Polycrystalline Polykristall WC 94 + Co 6	-	h6	Ra ≤ 0,2 µm	- 1'550 HV	~5.1 • 10 ⁻⁶ °K ⁻¹	15 g/cm ³
Stainless steel for stand and support for calibration balls. Nichtrostender Stahl für Ständer und Grundplatte von Eichkugeln	Standard no. 1.4301 Norm Nr. 1.4301 DIN X 5 Cr Ni 18 9 AISI 304	Nonmagnetic Nicht- magnetisch	-	Ra ≤ 0,8 µm	- 300 HV	16 • 10 ⁻⁶ °K ⁻¹	7,9 g/cm ³

**ALL DIMENSIONS WITHOUT UNITS ARE IN MM • ALLE DIMENSIONEN OHNE EINHEITEN IN MM
SUBJECT TO MODIFICATIONS WITHOUT NOTICE • TECHNISCHE ÄNDERUNGEN VORBEHALTEN****Tél. 01.44.29.00.00 - Fax. 01.46.22.26.10**

CIMAP
13, av. de la Porte de Champerret
75017 PARIS

RUBY BALL
RUBINKUGEL

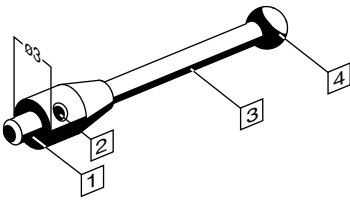
CYLINDER

ZYLINDER

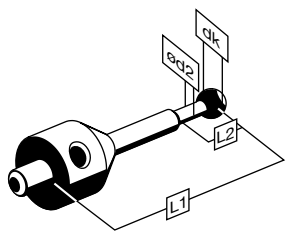
CIMAP

**13, av. de la Porte de Champerret
75017 PARIS**

M2 RENISHAW
COMPATIBLE

Characteristics	Eigenschaften	
<p>1 M2 x 0,4 screw thread 2 \varnothing 1,3 mm spanner hole 3 Stem</p> <ul style="list-style-type: none"> • stainless steel SS • Tungsten carbide TC • White ceramic CE • Carbon fiber <p>4 Ruby ball</p>	<p>1 M2 x 0,4 mm Anschlussgewinde 2 Loch \varnothing 1,3 mm für Stiftschlüssel 3 Schaftmaterial:</p> <ul style="list-style-type: none"> • rostfreier Stahl SS • Hartmetall TC • Keramik CE • CFK <p>4 Rubinkugel</p>	

STYLI WITH RUBY BALL AND TUNGSTEN CARBIDE STEM
TASTSTIFTE MIT RUBINKUGEL UND HARTMETALLSCHAFT

dk	$\varnothing d2$	L1	L2	Part No	Renishaw No	SWIP order No	
0,3	0,2	10	2,1	43092-9501.00	--	500028	
0,5	0,3	10	2,2	43092-9502.00	--	500032	
0,5	0,3	10	3	46092-7805-00	A-5000-7805	505451	
0,5	0,3	20	2,2	43092-9621.00	--	500217	
0,7	0,5	10	2	43092-9631.00	--	500216	
0,7	0,5	10	4	46092-7801-00	A-5000-7801	505452	



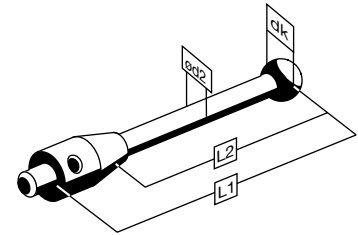
R-M2-01

Tél. 01.44.29.00.00 - Fax. 01.46.22.26.10

**M2 RENISHAW
 COMPATIBLE**

STYLI WITH RUBY BALL AND TUNGSTEN CARBIDE STEM
 TASTSTIFTE MIT RUBINKUGEL UND HARTMETALLSCHAFT

dk	Ød2	L1	L2	Part No	Renishaw No	SWIP order No
1	0,8	10	4	43092-9503.00	A-5000-7806	500215
1	0,8	15	9	43092-9616.00	--	500214
1	0,68	20	7	46092-7808-00	A-5000-7808	505315
1	0,8	20	14	43092-9622.00	A-5003-0033	500213
1	0,8	30	24	43092-9152.00	A-5000-8663	500212
1,5	1	10	4	43092-9632.00	A-5000-7802	500211
1,5	1	20	14	43092-9619.00	A-5003-0034	500210
1,5	1	30	24	43092-9620.00	A-5003-0035	500209
2	1	10	4	43092-9504.00	A-5000-7807	500208
2	1	15	10	43092-9617.00	--	500207
2	1	20	15	43092-9505.00	A-5000-3603	500206
2	1	30	25	43092-9623.00	A-5003-0036	500205
2	1	40	35	43092-9625.00	A-5003-0037	500204
2,5	1,5	10	6	43092-9633.00	A-5000-7803	500203
2,5	1,5	20	10	43092-9634.00	A-5000-7804	500202
2,5	1,5	30	26	43092-9636.00	A-5003-0038	500201
2,5	1,5	40	36	43092-9637.00	A-5003-0039	500200
3	1,5	10	7	43092-9506.00	A-5000-3604	500199
3	1,5	20	17	43092-9507.00	A-5000-4160	500198
3	1,5	30	27	43092-9624.00	A-5003-0040	500197
3	1,5	40	37	43092-9626.00	A-5003-0041	500196
3	1,5	50	47	43092-9628.00	A-5003-0042	500195
4	2	10	10	43092-9508.00	A-5000-4154	500194
4	2	20	20	43092-9509.00	A-5000-4161	500193
4	2	30	30	43092-9510.00	A-5003-0043	500192
4	2	40	40	43092-9627.00	A-5003-0044	500191
4	2	50	50	43092-9629.00	A-5003-0045	500190
5	2	10	10	43092-9511.00	A-5000-4155	500189
5	2	20	20	43092-9512.00	A-5003-0046	500188
5	2	30	30	43092-9513.00	A-5003-0047	500187
5	2	40	40	43092-9614.00	A-5003-0048	500186
5	2	50	50	43092-9615.00	A-5003-0049	500185
6	2	10	10	43092-9514.00	A-5000-4156	500184
6	2	25	25	43092-9618.00	--	500183



CIMAP

13, av. de la Porte de Champerret
75017 PARIS

M2 RENISHAW COMPATIBLE

STYLI WITH RUBY BALL AND CERAMIC STEM
TASTSTIFTE MIT RUBINKUGEL UND KERAMIKSCHAFT

dk	Ød2	L1	L2	Part No	Renishaw No	SWIP order No	
3	1,5	50	47	43091-9628.00	A-5003-0064	500181	
4	2	10	10	43091-9508.00	--	500180	
4	2	20	20	43091-9509.00	--	500179	
4	2	30	30	43091-9510.00	--	500178	
4	2	40	40	43091-9627.00	--	500177	
4	2	50	50	43091-9629.00	A-5003-0065	500176	
5	2	10	10	43091-9511.00	--	500175	
5	2	20	20	43091-9512.00	--	500174	
5	2	30	30	43091-9513.00	--	500173	
5	2	50	50	43091-9615.00	A-5003-0066	500172	
6	2	10	10	43091-9514.00	--	500171	

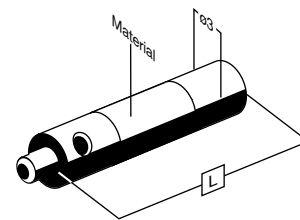
STYLI WITH RUBY BALL AND CARBON FIBER STEM TASTSTIFTE MIT RUBINKUGEL UND CFK SCHAFT

dk	L	Renishaw No	SWIP order No	
4	40	--	505883	
4	50	A-5003-2285	505884	
5	40	--	505885	
5	50	A-5003-2286	505886	
6	40	--	505887	
6	50	A-5003-2287	505888	



**M2 RENISHAW
 COMPATIBLE**
 STYLUS EXTENSIONS
 TASTSTIFTVERLÄNGERUNGEN

L	Part No	Material	Renishaw No	SWIP order No
5	43030-9160.00	SS	M-5000-7634	500170
10	43030-9161.00	SS	M-5000-3647	500169
20	43030-9162.00	SS	M-5000-3648	500168
30	43030-9163.00	SS	M-5000-4162	500167
40	43030-9164.00	SS	M-5000-7779	500166
60	43030-9165.00	SS	--	500165
90	43030-9166.00	SS	--	500164
30	43090-9156.00	CE	A-5003-0070	500163
40	43090-9157.00	CE	A-5003-0071	500162
50	43090-9158.00	CE	A-5003-0072	500161
60	43090-9159.00	CE	--	500160
40	43099-9206.00	CFK	A-5003-2280	505890
50	43099-9207.00	CFK	A-5003-2281	505891
70	43099-9208.00	CFK	A-5003-2282	505892
90	43099-9209.00	CFK	A-5003-2283	505893

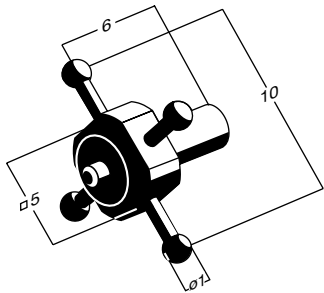


SS: STAINLESS STEEL / NICHTROSTENDER STAHL
CE: CERAMIC / KERAMIK
CFK: CARBON FIBER / KOHLEFASER

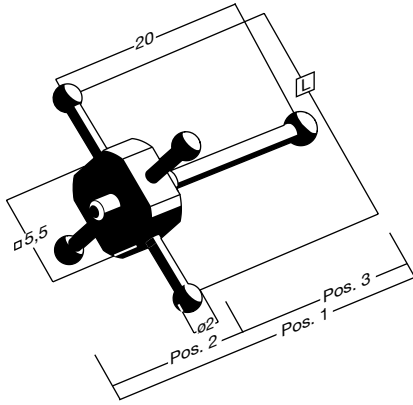
CIMAP

13, av. de la Porte de Champerret
75017 PARIS



M2 RENISHAW
COMPATIBLE
STAR STYLI
STERNFÖRMIGE TASTSTIFTE

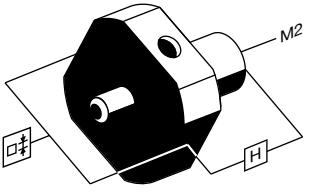
Part No	Renishaw No	SWIP order No	
43092-9464.00	A-5000-7811	500157	

STAR STYLI
STERNFÖRMIGE TASTSTIFTE

Pos.	L	Part No	Renishaw No	SWIP order No	
1	20	43092-9468.00	A-5000-7629	500156	
1	30	43092-9469.00	A-5000-3626	500155	
2	20	43094-9468.10	--	502954	
2	30	43094-9469.10	--	502955	
3	--	43092-9539.00	--	500154	

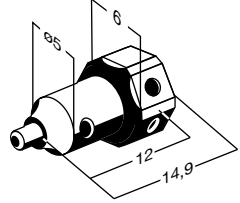
M2 RENISHAW
 COMPATIBLE
 4 AND 5 WAYS STYLUS CENTRE
 4- UND 5-WEGE TASTSTIFTHALTER

Number of ways	H			Swiveling	Part No	Renishaw No	SWIP order No
4	6	--	7,5	4	43030-9258.00	A-5000-8395	500153
5	7	7	--	--	43030-9255.00	--	500152
5	6	7	--	4	43030-9257.00	A-5000-3627	500151



CROSSHEAD SWIVELING
 KREUZKOPF DREHBAR MIT KUPPLUNG

Part No	SWIP order No
44030-515520	501618



CROSSHEAD SWIVELING
 KREUZKOPF DREHBAR MIT KUPPLUNG

Part No	SWIP order No
44030-515500	501608

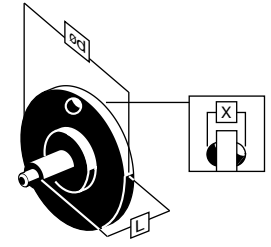


CIMAP

**13, av. de la Porte de Champerret
75017 PARIS**

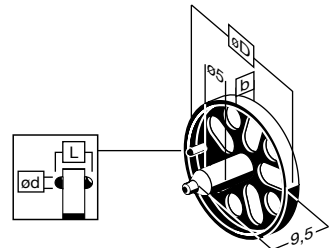
**M2 RENISHAW
COMPATIBLE**
DISC STYLI
SCHEIBENFÖRMIGE TASTSTIFTE

Ød	L	x	Part No	Renishaw No	SWIP order No
6	10	2	43092-9267.00	--	500144
18	7,5	2,5	43094-9390.00	A-5000-7809	500147
25	7,5	2,5	43094-9391.00	A-5000-7810	500146



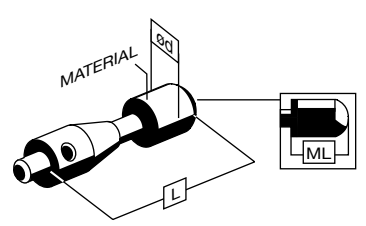
DISC STYLI SWIVELING
SCHEIBENFÖRMIGE TASTSTIFTE DREHBAR

b	ØD	L	Ød	Part No	SWIP order No
2,4	25	3,4	1,0	44094-515450	501604
3,7	40	5,7	2,0	44094-515460	501606



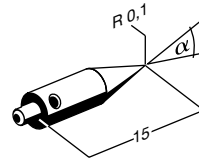
STAINLESS STEEL AND RUBY CYLINDER STYLI
ZYLINDERFÖRMIGE TASTSTIFTE AUS NICHTROSTENDEM STAHL UND RUBIN

Ød	L	ML	Material	Part No	SWIP order No
1,5	11	1,5	stainless steel	43030-9220.00	500031
3	13	4	stainless steel	43030-9221.00	500030
1	15	9,5	ruby	43094-9612.00	503934
2	20	7,2	ruby	43092-9610.00	500027
4	20	10,5	ruby	43092-9611.00	500029



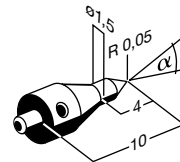
M2 RENISHAW COMPATIBLE
STAINLESS STEEL POINTER STYLI
PUNKT-TASTSTIFTE AUS NICHTROSTENDEM STAHL

α	Part No	Renishaw No	SWIP order No
30°	43030-9230.00	M-5000-4150	500140
60°	43030-9231.00	--	502722



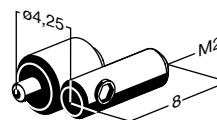
TUNGSTEN CARBIDE POINTER STYLI
PUNKT-TASTSTIFTE AUS HARTMETALL

α	Part No	Renishaw No	SWIP order No
30°	43095-9232.00	A-5000-7813	502493
60°	43095-9233.00	--	502494



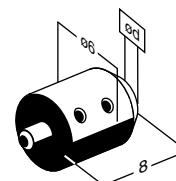
KNUCKLE JOINT
DREHGELENK

Part No	SWIP order No
43030-030-9101	504269



SUPPORT FOR STYLUS WITHOUT THREAD
HALTER FÜR TASTSTIFTE OHNE GEWINDE

$\emptyset d$	Part No	Renishaw No	SWIP order No
1	43030-9420.00	--	503064
1,5	43030-9421.00	--	503065
2	43030-9422.00	--	503066

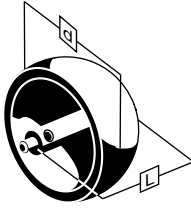


CIMAP


13, av. de la Porte de Champerret
75017 PARIS

M2 RENISHAW COMPATIBLE

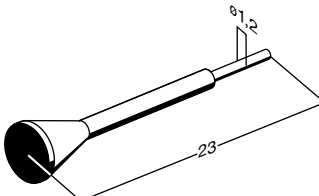
STYLI WITH CERAMIC HOLLOW BALL
TASTSTIFTE MIT HOHLER KERAMIKKUGEL

d	L	Part No	Renishaw No	SWIP order No	
18	14,5	43090-9580.00	A-5000-3614	500145	
20	16	43090-9581.00	--	500143	
25	18,5	43090-9582.00	--	500142	
30	21	43090-9583.00	--	500141	

TOOLSPANNER FOR PROBE WERKZEUG FÜR TASTER

Part No	SWIP order No	
43030-9635.03	503073	

STYLUS TOOL TASTSTIFTSCHLÜSSEL

Part No	SWIP order No	
41930-030-0001	504285	

1,5 mm A/F HEXAGON KEY IMBUS-SCHLÜSSEL 1.5 mm

Part No	SWIP order No	
43030-9635.02	504237	



R-M2-09

Tél. 01.44.29.00.00 - Fax. 01.46.22.26.10

CIMAP

13, av. de la Porte de Champerret
75017 PARIS

M2 RENISHAW COMPATIBLE

STYLUS KIT
TASTSTIFTSATZ

Part No	SWIP order No
43599-9670.00	500341

Contents	Quantity	Contents	Quantity
43030-9160.00	4	43092-9504.00	3
43030-9161.00	3	43092-9505.00	5
43030-9162.00	2	43092-9506.00	5
43030-9163.00	2	43092-9507.00	3
43030-9164.00	2	43092-9508.00	3
43030-9210.00	1	43092-9509.00	3
43030-9220.00	1	43092-9511.00	2
43030-9221.00	1	43092-9514.00	2
43030-9230.00	1	43090-9580.00	1
43030-9231.00	1	43092-9610.00	1
43030-9240.00	1	43092-9611.00	1
43030-9257.00	1	43092-9622.00	1
43092-9267.00	1	43094-9630.00	1
43094-9390.00	1	43092-9631.00	1
43094-9391.00	1	43092-9632.00	1
43092-9464.00	1	43092-9633.00	1
43092-9468.00	1	43092-9634.00	2
43092-9469.00	1	43030-9635.01	1
43092-9501.00	1	43030-9635.02	1
43092-9502.00	2	43030-9635.03	1
43092-9503.00	2		

STYLUS KIT
TASTSTIFTSATZ

Part No	SWIP order No
43599-9671.00	500342

Contents	Quantity	Contents	Quantity
43030-9164.00	1	43092-9610.00	1
43030-9231.00	1	43092-9622.00	1
43094-9390.00	1	43092-9631.00	1
43094-9391.00	1	43092-9632.00	1
43092-9468.00	1	43092-9633.00	1
43092-9501.00	1	43092-9634.00	2
43092-9502.00	1	43030-9635.01	2
43092-9503.00	1	43030-9635.02	1
43092-9504.00	1	43030-9635.03	1

STYLUS KIT
TASTSTIFTSATZ

Part No	SWIP order No
43599-9672.00	500343

Contents	Quantity	Contents	Quantity
43030-9160.00	1	43092-9508.00	1
43030-9161.00	1	43092-9509.00	1
43030-9162.00	1	43092-9514.00	1
43030-9164.00	1	43092-9616.00	1
43030-9230.00	1	43092-9617.00	1
43030-9231.00	1	43092-9618.00	1
43030-9240.00	1	43030-9635.01	1
43030-9257.00	1	43030-9635.02	1
43092-9503.00	1	43030-9635.03	1
43092-9504.00	1		



CIMAP

**13, av. de la Porte de Champerret
75017 PARIS**

M3 RENISHAW
COMPATIBLE

Characteristics	Eigenschaften	
1 M3 x 0,5 screw thread 2 \varnothing 1,25 mm spanner hole 3 Stem: <ul style="list-style-type: none"> • stainless steel SS • Tungsten carbide TC • White ceramic CE • Carbon fiber 4 Ruby ball	1 M3 x 0,5 mm Anschlussgewinde 2 Loch \varnothing 1,25 mm für Stiftschlüssel 3 Schaftmaterial: <ul style="list-style-type: none"> • rostfreier Stahl SS • Hartmetall TC • Keramik CE • CFK 4 Rubinkugel	

**STYLI WITH RUBY BALL AND TUNGSTEN CARBIDE STEM
TASTSTIFTE MIT RUBINKUGEL UND HARTMETALLSCHAFT**

dk	$\varnothing d2$	L1	L2	Part No	SWIP order No	
0,5	0,3	21	2,2	43192-9521.00	500344	

**STYLI WITH RUBY BALL AND CERAMIC STEM
TASTSTIFTE MIT RUBINKUGEL UND KERAMIKSCHAFT**

dk	$\varnothing d2$	L1	L2	Part No	Renishaw No	SWIP order No	
3	1,5	50	45	43191-9534.00	A-5003-0067	500375	
4	2	21	17	43191-9525.00	--	500374	
4	2	30	26	43191-9526.00	--	500373	
4	2	40	36	43191-9533.00	--	500372	
4	2	50	46	43191-9535.00	A-5003-0068	500371	
5	2	21	21	43191-9527.00	--	500370	
5	2	30	30	43191-9528.00	--	500369	
5	2	40	40	43191-9597.00	--	502112	
5	2	50	50	43191-9598.00	A-5003-0069	500368	
8	3	21	21	43191-9536.00	--	500367	



R-M3-01

Tél. 01.44.29.00.00 - Fax. 01.46.22.26.10

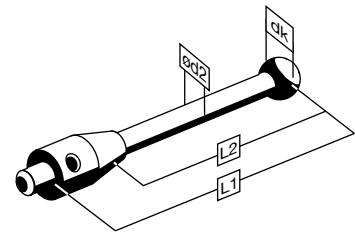
CIMAP

**13, av. de la Porte de Champerret
75017 PARIS**

**M3 RENISHAW
COMPATIBLE**

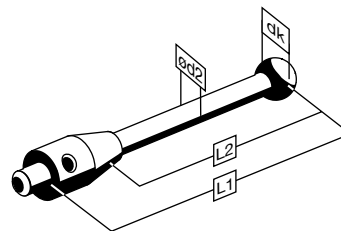
**STYLI WITH RUBY BALL AND TUNGSTEN CARBIDE STEM
TASTSTIFTE MIT RUBINKUGEL UND HARTMETALLSCHAFT**

dk	Ød2	L1	L2	Part No	Renishaw No	SWIP order No
1	0,8	21	4,4	43192-9522.00	A-5000-3551	500345
1,5	1	20	10	43192-9594.00	A-5003-0050	500346
1,5	1	30	21	43192-9537.00	A-5003-0051	500347
2	1	21	15	43192-9523.00	A-5000-3552	500348
2	1	30	24	43192-9529.00	A-5003-0052	500349
2	1	40	34	43192-9531.00	A-5003-0053	500350
2,5	1,5	20	13	43192-9595.00	A-5003-0054	500351
2,5	1,5	30	23	43192-9538.00	A-5003-0055	500352
2,5	1,5	40	33	43192-9596.00	A-5003-0056	500353
3	1,5	21	16	43192-9524.00	A-5000-3553	500354
3	1,5	30	25	43192-9530.00	A-5003-0057	500355
3	1,5	40	35	43192-9532.00	A-5003-0058	500356
3	1,5	50	45	43192-9534.00	A-5003-0059	500357
4	2	21	17	43192-9525.00	A-5000-7606	500358
4	2	31	27	43192-9526.00	--	500359
4	2	40	36	43192-9533.00	A-5003-0060	500360
4	2	50	46	43192-9535.00	A-5003-0061	500361
5	2	21	21	43192-9527.00	A-5000-7630	500362
5	2	31	31	43192-9528.00	--	500363
5	2	40	40	43192-9597.00	A-5003-0062	500364
5	2	50	50	43192-9598.00	A-5003-0063	500365
8	3	21	21	43192-9536.00	--	500366



**STYLI WITH RUBY BALL AND CARBON FIBER STEM
TASTSTIFTE MIT RUBINKUGEL UND CFK SCHAFT**

dk	Ød2	L1	L2	SWIP order No
4	2	50	40	505876
5	3	50	40	505596
5	3	60	50	505662
6	3	50	40	505877
6	3	60	50	505878

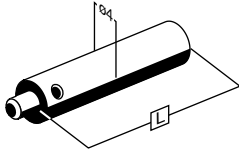


CIMAP

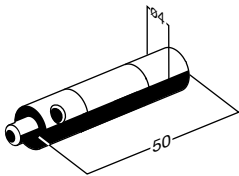
13, av. de la Porte de Champerret
75017 PARIS

M3 RENISHAW COMPATIBLE

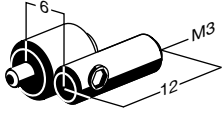
STAINLESS STEEL STYLUS EXTENSIONS
TASTSTIFVERLÄNGERUNGEN AUS NICHTROSTENDEM STAHL

L	Part No	Renishaw No	SWIP order No	
10	43130-9170.00	M-5000-7633	500458	
20	43130-9171.00	M-5000-3592	500377	
30	43130-9172.00	--	500378	
35	43130-9175.00	M-5000-3593	500379	
40	43130-9173.00	--	500380	
50	43130-9174.00	--	500381	

CERAMIC STYLUS EXTENSION TASTSTIFVERLÄNGERUNG AUS KERAMIK

Part No	Renishaw No	SWIP order No	
43190-9176.00	A-5003-0075	500384	

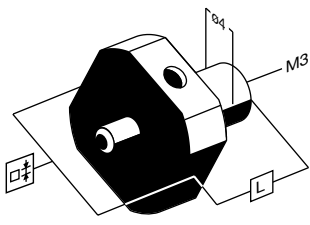
STYLUS KNUCKLE DREHGELENK

Part No	Renishaw No	SWIP order No	
43130-030-9102	--	504268	



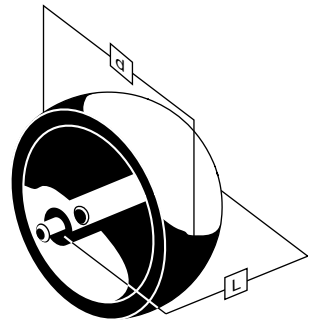
M3 RENISHAW
 COMPATIBLE
 5 WAYS STYLI CENTRE
 5-WEGE TASTSTIFTHALTER

L		Swiveling	Part No	Renishaw No	SWIP order No
9	12	--	43130-9256.00	--	500387
8	10	4	43130-9259.00	A-5000-7610	500386



STYLI WITH CERAMIC HOLLOW BALL
 TASTSTIFTE MIT HOHLER KERAMIKKUGEL

d	L	Part No	Renishaw No	SWIP order No
18	14,5	43190-9590.00	--	500388
20	16	43190-9591.00	--	500389
25	18,5	43190-9592.00	--	500390
30	21	43190-9593.00	A-5000-7814	500391



CIMAP

**13, av. de la Porte de Champerret
75017 PARIS**

M4 RENISHAW
COMPATIBLE

Characteristics	Eigenschaften	
1 M4 x 0,7 screw thread 2 ø 2 mm spanner hole 3 Stem: <ul style="list-style-type: none"> • stainless steel SS • Tungsten carbide TC • White ceramic CE • Carbon fiber 4 Ruby ball	1 M4 x 0,7 mm Anschlussgewinde 2 Loch ø 2 mm für Stiftschlüssel 3 Schaftmaterial: <ul style="list-style-type: none"> • rostfreier Stahl SS • Hartmetall TC • Keramik CE • CFK 4 Rubinkugel	

**STYLI WITH RUBY BALL
TASTSTIFTE MIT RUBINKUGEL**

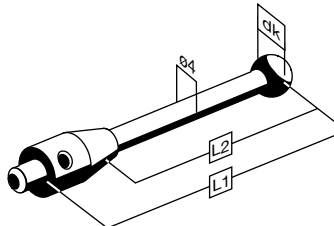
dk	Ød2	L2	L1	Material	Part No	Renishaw No	SWIP order No	
0,5	0,3	2,2	19,75	TC	43292-9392.00	--	500509	
1	0,8	4,5	19,5	TC	43292-9393.00	A-5000-7545	500510	
2	1,2	8	19	TC	43292-9394.00	A-5000-7547	500511	
3	--	13,5	18,5	SS	43294-9395.00	A-5000-7549	500512	
3	2	21	30	TC	43292-9554.00	--	500522	
3	2	41	50	TC	43292-9555.00	--	500523	
4	3,1	13	18	SS	43294-9396.00	A-5000-7551	500513	
4	3	21	30	TC	43292-9556.00	--	500524	
4	3	41	50	TC	43292-9557.00	--	500525	
5	3	5	10	SS	43294-9563.00	--	500517	
5	3	15	20	SS	43294-9386.00	A-5000-7553	500518	
5	3,6	12,5	17,5	SS	43294-9397.00	A-5000-6731	500514	
5	3	25	30	SS	43294-9387.00	--	500519	
5	3,5	34	50	TC	43292-9388.00	A-5000-7521	500520	
5	3,5	84	100	TC	43292-9389.00	A-5000-7522	500521	
6	4,5	13	17	SS	43294-9398.00	A-5000-7555	500515	
6	4,5	21	30	TC	43292-9558.00	--	500526	
6	4,5	34	50	TC	43292-9559.00	--	500527	
8	5,1	12,5	16	SS	43294-9399.00	A-5000-7557	500516	

SS : Stainless Steel
TC : Tungsten Carbide

**M4 RENISHAW
COMPATIBLE**

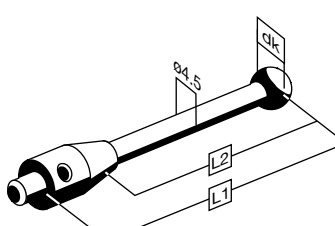
STYLI WITH RUBY BALL AND CARBON FIBER STEM
TASTSTIFTE MIT RUBINKUGEL UND CFK SCHAFT

dk	L2	L1	Renishaw No	SWIP order No
6	34	50	A-5003-1436	505879
6	84	100	A-5003-1358	505923
6	134	150	A-5003-1255	505881
6	184	200	A-5003-1075	505882



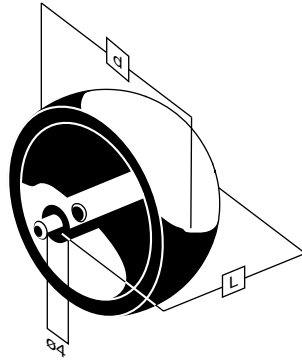
STYLI WITH RUBY BALL AND CERAMIC STEM
TASTSTIFTE MIT RUBINKUGEL UND KERAMIKSCHAFT

Ødk	L1	L2	Part No	Renishaw No	SWIP order No
6	50	34	43291-9567.00	A-5000-3709	500528
6	100	84	43291-9604.00	A-5000-3712	500529
8	50	34	43291-9570.00	A-5000-7795	500530
8	100	84	43291-9571.00	A-5000-7796	500531



STYLI WITH CERAMIC HOLLOW BALL
TASTSTIFTE MIT HOHLER KERAMIKKUGEL

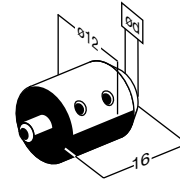
d	L	Part No	SWIP order No
18	14,5	43290-9600.00	500541
20	16	43290-9601.00	500540
25	18,5	43290-9602.00	500539
30	21	43290-9603.00	504794



**M4 RENISHAW
 COMPATIBLE**

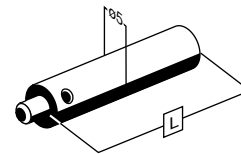
PIN HOLDER
HALTER FÜR TASTSTIFTE OHNE GEWINDE

Ød	Part No	SWIP order No
1	43230-9440.00	500548
1,5	43230-9441.00	500547
2	43230-9442.00	500546
3,5	43230-9443.00	500545
4	43230-9444.00	500544
4,5	43230-9445.00	500543
8	43230-9446.00	500542



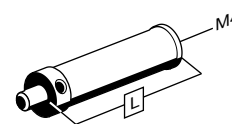
STAINLESS STEEL STYLUS EXTENSIONS
TASTSTIFTVERLÄNGERUNGEN AUS NICHTTROTSTEMEM STAHL

L	Part No	SWIP order No
20	43230-9181.00	500536
30	43230-9182.00	500535
40	43230-9183.00	500534
50	43230-9184.00	500533
60	43230-9185.00	500532



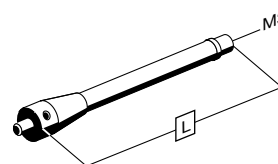
EXTENSIONS IN CERAMIC
TASTSTIFTVERLÄNGERUNGEN AUS KERAMIK

L	Part No	Renishaw No	SWIP order No
30	43290-9234.00	A-5000-7754	503203
50	43290-9235.00	A-5000-7555	503204



ADAPTORS IN CERAMIC
ADAPTER AUS KERAMIK

L	Part No	Renishaw No	SWIP order No
50	43290-9236.00	A-5000-7751	503205
75	43290-9237.00	A-5000-7752	503206
100	43290-9238.00	A-5000-7753	503207





CIMAP
13, av. de la Porte de Champerret
75017 PARIS



Tél. 01.44.29.00.00 - Fax. 01.46.22.26.10

CIMAP
13, av. de la Porte de Champerret
75017 PARIS



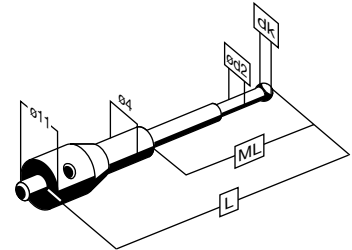
CIMAP

**13, av. de la Porte de Champerret
75017 PARIS**

**M5 ZEISS
COMPATIBLE**

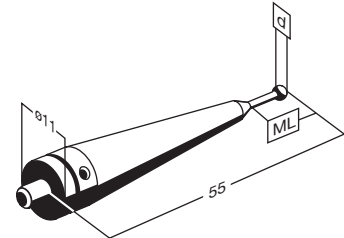
**STYLI WITH RUBY BALL AND TUNGSTEN CARBIDE STEM
TASTSTIFTE MIT RUBINKUGEL UND HARTMETALLSCHAFT**

dk	Ød2	ML	L	Zeiss No	Part No	SWIP order No
0,8	0,6	12	32	602030 - 8060	41989-030-8060	501780
1	0,8	12	32	602030 - 8061	41989-030-8061	502413
1,35	1	12	32	602030 - 8062	41989-030-8062	501779
1,35	1	19	44	602030 - 8063	41989-030-8063	504843
1,5	1	12	32	602030 - 8064	41989-030-8064	501771
1,5	1	19	44	602030 - 8065	41989-030-8065	502229
2	1,5	12	32	602030 - 8066	41989-030-8066	504888
2	1,5	19	44	602030 - 8067	41989-030-8067	504845
2	1,5	33	58	602030 - 8068	41989-030-8068	504795
2,5	1,5	12	32	602030 - 8069	41989-030-8069	505156
2,5	1,5	19	44	602030 - 8070	41989-030-8070	505479
2,5	1,5	33	58	602030 - 8071	41989-030-8071	505176



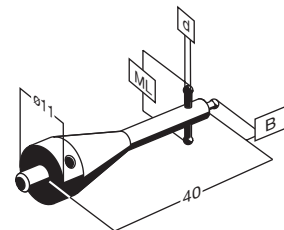
**FINE STYLI
FEINTASTER**

d	ML	Zeiss No	Part No	SWIP order No
1	4	602030-9019	41989-030-9019	504596
1,5	5	602030-9020	41989-030-9020	504763
2	5	602030-9021	41989-030-9021	505334
2,5	5	602030-9022	41989-030-9022	504389
3,5	10	602030-9023	41989-030-9023	505335



**STYLI FOR THREAD MEASUREMENTS
TASTSTIFTE FÜR GEWINDEMESSUNGEN**

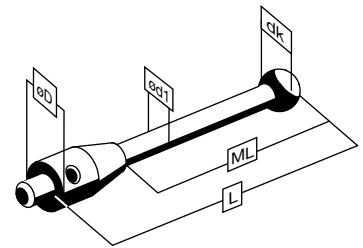
d	ML	B	Zeiss No	Part No	SWIP order No
0,8	5	1,9	602030-9073	41989-030-9073	505407
1,35	9	2	602030-9070	41989-030-9070	504390
1,8	10	2	602030-9072	41989-030-9072	505584
2,3	12	2,5	602030-9071	41989-030-9071	--



**M5 ZEISS
COMPATIBLE**

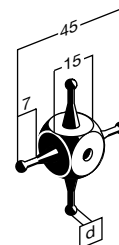
**STYLI WITH RUBY BALL AND TUNGSTEN CARBIDE STEM
TASTSTIFTE MIT RUBINKUGEL UND HARTMETALLSCHAFT**

dk	Ød1	Ø D	ML	L	Zeiss No	Part No	SWIP order No
3	2	11	15	25	602030 - 9010	41989-030-9010	504173
3	2	11	23,5	33,5	600342 - 8020	41089-9053.00	504168
3	2	11	40	50	602030 - 9011	41989-030-9011	504226
3	2	11	48	58	600342 - 8021	41089-9054.00	504169
4	2	11	23,5	33,5	600342 - 8025	41089-9076.00	504174
4	2	11	54	64	602030 - 9012	41989-030-9012	504315
5	3,5	11	40	50	602030 - 9013	41989-030-9013	502208
5	3,5	11	43	53	600342 - 8022	41089-9055.00	504172
5	3,5	11	65	75	602030 - 9015	41989-030-9015	504228
6	3,5	11	44	54	600342 - 8026	41089-9077.00	504171
7	3,5	11	45	55	600342 - 8027	41089-9078.00	504170
8	6	11	50,5	63,5	600342 - 8023	41089-9056.00	504347
8	6	19	41,5	63,5	600342 - 8123	41089-9138.00	500412
8	6	11	61	74	602030 - 9014	41989-030-9014	503196
8	6	11	62	75	602030 - 9016	41989-030-9016	504450
8	6	11	87	100	602030 - 9017	41989-030-9017	502943
8	6	11	101,5	114,5	600342 - 8024	41089-9057.00	504599
8	6	19	92,5	114,5	600342 - 8124	41089-9137.00	501778
9	6	11	51,5	64,5	600342 - 8028	41089-9079.00	504715
9	6	19	42,5	64,5	600342 - 8128	41089-9136.00	500414
10	6	11	52,5	65,5	600342 - 8029	41089-9080.00	500420
10	6	19	43,5	65,5	600342 - 8129	41089-9135.00	500415
10	6	11	105	118	602030 - 9018	41989-030-9018	501781



**STAR CUBE
WÜRFELSTERN**

d	Zeiss No	Part No	SWIP order No
1	602030-9024	41992-030-9024	500150
1,5	602030-9025	41992-030-9025	503002
2	602030-9026	41992-030-9026	503016
2,5	602030-9027	41992-030-9027	500139
3,5	602030-9028	41992-030-9028	503017



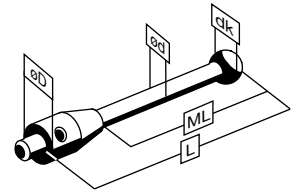
CIMAP

**13, av. de la Porte de Champerret
75017 PARIS**

**M5 ZEISS
COMPATIBLE**

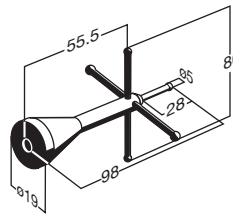
**STYLI WITH RUBY BALL AND CERAMIC STEM
TASTSTIFTE MIT RUBINKUGEL UND KERAMIKSCHAFT**

dk	ØD	Ød	ML	L	Zeiss No	Part No	SWIP order No
5	11	3,5	43	53	600342 - 8013	41084-9055.00	504230
6	11	3,5	44	54	600342 - 8016	41084-9077.00	504204
7	11	3,5	45	55	600342 - 8017	41084-9078.00	500416
8	11	6	50,5	63,5	600342 - 8014	41084-9056.00	502566
8	19	6	41,5	63,5	600342 - 8114	41084-9138.00	500421
8	19	6	92,5	114,5	600342 - 8115	41084-9137.00	500422
8	11	6	101,5	114,5	600342 - 8015	41084-9057.00	500418
9	11	6	51,5	64,5	600342 - 8018	41084-9079.00	500419
9	19	6	42,5	64,5	600342 - 8118	41084-9136.00	500423
10	19	6	43,5	65,5	600342 - 8119	41084-9135.00	504717
10	11	6	52,5	65,5	600342 - 8019	41084-9080.00	504716



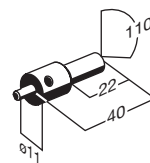
**STAR STYLUS
STERNTASTER**

Zeiss No	Part No	SWIP order No
600331-8093	41992-331-8093	505001



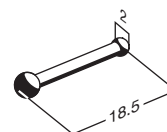
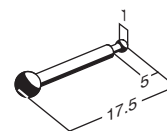
**HOLDER FOR SWIVELING STYLUS
HALTER FÜR SCHWENKBARE TASTSTIFTE**

Zeiss No	Part No	SWIP order No
600341-8180	41930-341-8180	503453



**SWIVELING STYLUS (TUNGSTEN CARBIDE)
SCHWENKBARE TASTSTIFTE (HARTMETALL)**

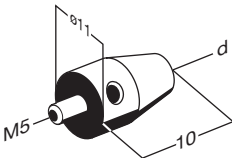
Zeiss No	Part No	SWIP order No
600341-8183	41992-341-8183	503313
600341-8185	41992-341-8185	504847



M5 ZEISS COMPATIBLE

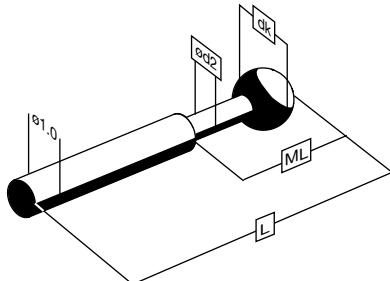
ADAPTOR
 ADAPTER

d	Zeiss No	Swip order No
M2	602030-0215	502941
M3	602030-0315	502942



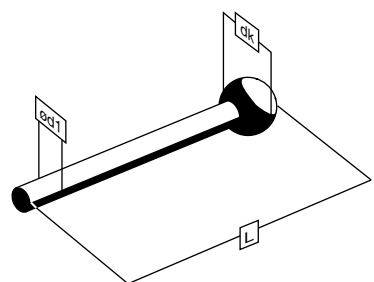
STYLI WITH RUBY BALL AND TUNGSTEN CARBIDE STEM
TASTSTIFTE MIT RUBINKUGEL UND HARTMETALLSCHFT

dk	Ød2	ML	L	Zeiss No	Part No	SWIP order No
0,3	0,2	2,3	15,3	600341 - 8450	41088-9017.00	500392
0,5	0,3	2,5	15,5	600341 - 8451	41088-9018.00	500393
0,6	0,4	4,6	15,6	600341 - 8452	41088-9019.00	500394
0,8	0,6	4,8	15,8	600341 - 8453	41088-9020.00	500395
1,0	0,8	5	16	600341 - 8454	41088-9021.00	500396
1,1	0,8	5,1	16,1	--	41088-9022.00	500397




STYLI WITH RUBY BALL AND TUNGSTEN CARBIDE STEM
TASTSTIFTE MIT RUBINKUGEL UND HARTMETALLSCHFT

dk	d1	L	Zeiss No	Part No	SWIP order No
1,3	1	26.35	600341 - 8500	41088-9023.00	500398
1,5	1	26.5	600341 - 8501	41088-9024.00	500399
2	1,5	27	600341 - 8502	41088-9025.00	500400
2,5	1,5	27.5	600341 - 8503	41088-9026.00	500401
3	2	28	--	41088-9029.00	500402
3	2	38	600341 - 8510	41988-341-8510	501809
3,5	2	28.3	--	41088-9090.00	500403
4	2	28.7	--	41088-9091.00	500404
4,5	2	29.2	--	41088-9092.00	500405
5	2	29.7	--	41088-9030.00	500406
5	3,5	45	600341 - 8511	41988-341-8511	504387

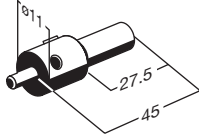


M5 ZEISS
COMPATIBLE

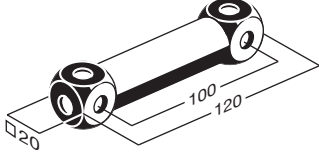
HOLDER FOR MAX. 5 STYLI
 HALTER FÜR MAX. 5 TASTSTIFTE

Ød	Zeiss No	Part No	SWIP order No	
1	600341-8367	41930-341-8367	502932	
1,5	600341-8368	41930-341-8368	502933	


HOLDER FOR STYLUS WITH D = 1...1,5 MM
 HALTER FÜR TASTER MIT D = 1...1,5 MM

Zeiss No	Part No	SWIP order No	
600341-8160	41930-341-8160	503579	

EXTENSION WITH CUBE (TITANIUM)
 VERLÄNGERUNG MIT WÜRFEL (TITAN)

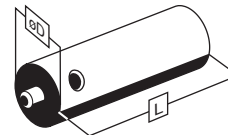
Zeiss No	Part No	SWIP order No	
602030-0019	41933-030-0019	502909	

CUBE (TITANIUM, ALUMINIUM)
 WÜRFEL (TITAN, ALUMINIUM)

B	Mat.	Zeiss No	Part No	SWIP order No	
15	Titan	600341-8361	41933-341-8361	502905	
15	Aluminium	602030-8363	41942-030-8363	504848	
20	Titan	600341-8002	41933-341-8002	502911	
20	Aluminium	602030-8362	41942-030-8362	505374	

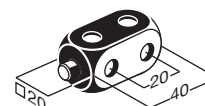
M5 ZEISS COMPATIBLE
EXTENSIONS (ALUMINIUM)
VERLÄNGERUNGEN (ALUMINIUM)

L	ØD	Zeiss No	Part No	SWIP order No
200	20	600341-8420	41942-341-8420	502893
150	20	600341-8421	41942-341-8421	502892
100	20	600341-8422	41942-341-8422	502891
80	20	600341-8423	41942-341-8423	502890
60	20	600341-8424	41942-341-8424	502889
40	20	600341-8425	41942-341-8425	502888
120	11	600341-8265	41942-341-8265	502898
100	11	600341-8264	41942-341-8264	502897
80	11	600341-8263	41942-341-8263	502896
60	11	600341-8262	41942-341-8262	502895
40	11	600341-8261	41942-341-8261	502894



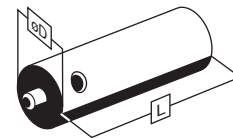
DOUBLE CUBE (TITANIUM)
DOPPELWÜRFEL (TITAN)

Zeiss No	Part No	SWIP order No
600342-8103	41933-342-8103	504865



M5 ZEISS
COMPATIBLE
EXTENSIONS (TITANIUM)
VERLÄNGERUNGEN (TITAN)

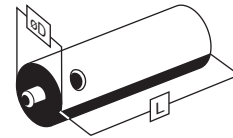
L	ØD	Zeiss No	Swip order No	SWIP order No
10	11	602030-9044	41933-030-9044	503028
15	11	602030-9045	41933-030-9045	503578
20	11	602030-9046	41933-030-9046	503029
25	11	602030-9047	41933-030-9047	503030
25	18	602030-9048	41933-030-9048	505475
40	11	602030-9049	41933-030-9049	503031
40	18	602030-9050	41933-030-9050	504106
50	11	602030-9051	41933-030-9051	503143
50	18	602030-9052	41933-030-9052	503181
60	11	602030-9053	41933-030-9053	503032
60	18	602030-9054	41933-030-9054	504161
75	11	602030-9055	41933-030-9055	505542
75	18	602030-9056	41933-030-9056	--
80	11	602030-9057	41933-030-9057	503033
80	18	602030-9058	41933-030-9058	502930
90	11	602030-9059	41933-030-9059	503144
90	18	602030-9060	41933-030-9060	504046
100	11	602030-9061	41933-030-9061	503034
100	18	602030-9062	41933-030-9062	502931
120	11	602030-9063	41933-030-9063	503035
120	18	602030-9064	41933-030-9064	502395
150	11	602030-9065	41933-030-9065	503036
150	18	602030-9066	41933-030-9066	502517
200	18	602030-9067	41933-030-9067	503037
250	18	602030-9068	41933-030-9068	503737
300	18	602030-9069	41933-030-9069	503736



**M5 ZEISS
 COMPATIBLE**

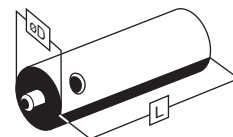
**EXTENSIONS (STAINLESS STEEL)
 VERLÄNGERUNGEN (NICHTROSTENDER STAHL)**

L	ØD	Zeiss No	Part No	SWIP order No
100	11	600341-0260	41930-341-0260	502929
80	11	600341-0258	41930-341-0258	502940
60	11	600341-0256	41930-341-0256	502939
40	11	600341-0254	41930-341-0254	502938
20	11	600341-0252	41930-341-0252	502937
15	11	600341-0251	41930-341-0251	503093
10	11	600341-0250	41930-341-0250	502935



**EXTENSIONS (CARBON FIBER)
 VERLÄNGERUNGEN (KOHLEFASER)**

L	ØD	Zeiss No	Part No	SWIP order No
40	11	602030-0263	41999-030-0263	504430
50	11	602030-0264	41999-030-0264	505168
60	11	602030-0262	41999-030-0262	502225
75	11	602030-0265	41999-030-0265	506104
80	11	602030-0261	41999-030-0261	502224
90	11	602030-0266	41999-030-0266	505867
100	11	602030-0267	41999-030-0267	503225
120	11	602030-0259	41999-030-0259	504429
150	11	602030-0268	41999-030-0268	503916
160	11	602030-0270	41999-030-0270	502223
200	11	602030-0275	41999-030-0275	503224
210	11	602030-0271	41999-030-0271	505379
40	21	602030-0295	41999-030-0295	504616
60	21	602030-0294	41999-030-0294	502222
80	21	602030-0293	41999-030-0293	505309
100	21	602030-0292	41999-030-0292	502217
150	21	602030-0291	41999-030-0291	502215
200	21	602030-0290	41999-030-0290	504617
250	21	602030-0274	41999-030-0274	--
300	21	602030-0269	41999-030-0269	505169



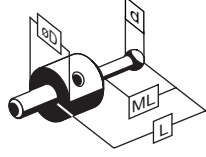
CIMAP

13, av. de la Porte de Champerret
75017 PARIS

M5 ZEISS COMPATIBLE

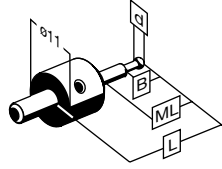
STYLUS FOR STAR CUBE
TASTSTIFT FÜR STERNTASTER UND MEHRFACH-TASTSTIFTAUFNAHME

d	L	ØD	ML	Zeiss No	Part No	SWIP order No
1,35	32,85	11	23,85	600342-8200	41992-342-8200	503187
1,5	33	11	24	600342-8201	41992-342-8201	503129
2	33,5	11	24,5	600342-8202	41992-342-8202	503124
2,5	34	11	25	600342-8203	41992-342-8203	503188
3	34,5	19	16,5	600342-8221	41992-342-8221	504160
5	43,5	19	25,5	600342-8222	41992-342-8222	504159



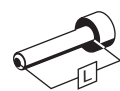
STYLUS FOR STAR CUBE
TASTSTIFT FÜR STERNTASTER UND MEHRFACH-TASTSTIFTAUFNAHME

d	L	ML	B	Zeiss No	Part No	SWIP order No
0,3	21,8	12,8	2,3	600342-8250	41992-342-8250	503192
0,5	22	13	2,5	600342-8251	41992-342-8251	503045
0,6	22,1	13,1	4,6	600342-8252	41992-342-8252	502765
0,8	22,3	13,3	4,8	600342-8253	41992-342-8253	502766
1	22,5	13,5	5	600342-8254	41992-342-8254	502382



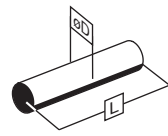
SCREW FOR CUBE
SCHRAUBE FÜR WÜRFEL

L	Zeiss No	Part No	SWIP order No
26	600341-0220	41930-341-0220	502936
21	600341-0221	41930-341-0221	503452



TUNGSTEN CARBIDE STEM FOR STAR STYLI
HARTMETALLSTIFT FÜR STERNTASTER

ØD	L	Zeiss No	Part No	SWIP order No
1	10	600341-0520	41909-341-0520	505739
1,5	10	600341-0521	41909-341-0521	505380
2	18	600341-0522	41909-341-0522	--
3,5	18	600341-0523	41909-341-0523	--




Z-M5-09

Tél. 01.44.29.00.00 - Fax. 01.46.22.26.10


CIMAP

13, av. de la Porte de Champerret
75017 PARIS

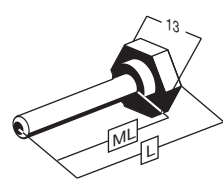
M5 ZEISS
COMPATIBLE
CLAMP DISC FOR STAR STYLUS
KLEMMSCHEIBE FÜR STERNTASTER

ØD	Zeiss No	Part No	SWIP order No	
11	600341-0140	41930-341-0140	503926	
19	600341-0141	41930-341-0141	505286	

SPINE DISC FOR STAR STYLUS
NUTZSCHEIBE FÜR STERNTASTER

d	ØD	Zeiss No	Part No	SWIP order No	
1/1,5	11	600341-0150	41930-341-0150	503122	
2/3,5	19	600341-0151	41930-341-0151	505287	

SCREW FOR DISC BALL AND CUBE
SCHRAUBE FÜR KUGELSCHEIBE UND WÜRFEL

ML	L	Zeiss No	Part No	SWIP order No	
26	35	600341-0210	41930-341-0210	505540	
21	30	600341-0211	41930-341-0211	504420	
10	17,3	600341-0212	41930-341-0212	502934	

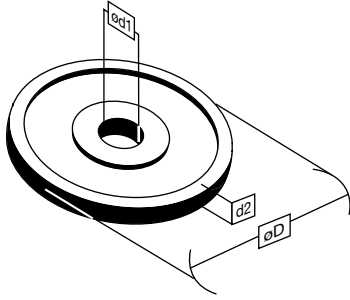
CIMAP

13, av. de la Porte de Champerret
75017 PARIS

M5 ZEISS COMPATIBLE

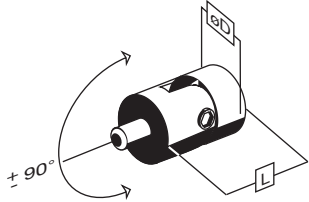
DISCS (STEEL)
TASTERSCHEIBEN (STAHL)

Ød1	d2	ØD	Zeiss No	Part No	SWIP order No
M5	4	10	602030-0003	41930-030-0003	--
M5	4	15	602030-0004	41930-030-0004	505371
M5	4	20	602030-0005	41930-030-0005	504790
M5	4	30	602030-0006	41930-030-0006	502513
M5	5	40	602030-0007	41930-030-0007	502516
M5	5	50	602030-0008	41930-030-0008	505296
M5	5	60	602030-0009	41930-030-0009	505681
8	4	15	602030-0010	41930-030-0010	505058
8	4	20	602030-0011	41930-030-0011	--
8	2	20	600341-0200	41930-341-0200	--
8	4	30	600341-0203	41930-341-0203	503407
8	4	40	600341-0204	41930-341-0204	505622
8	5	50	600341-0205	41930-341-0205	502230
8	6	60	600341-0206	41930-341-0206	505956



KNUCKLE JOINT (TITANIUM) GELENKSTÜCK (TITAN)

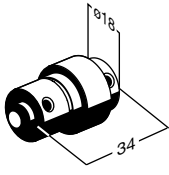
L	ØD	Zeiss No	Part No	SWIP order No
30	11	600342-9002	41933-342-9002	502904
36	18	600342-9003	41933-342-9003	502903




Z-M5-11

Tél. 01.44.29.00.00 - Fax. 01.46.22.26.10

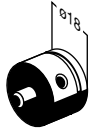
M5 ZEISS
COMPATIBLE
 SWIVELING HOLDER WITH SHANK
 DREHSTÜCK MIT KONUS

Zeiss No	Part No	SWIP order No	
602030-8357	41930-030-8357	503696	

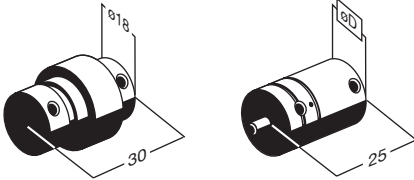
ADAPTOR WITH SHANK
 ADAPTERSTÜCK MIT KONUS

Zeiss No	Part No	SWIP order No	
600331-0001	41930-331-0001	505705	

ADAPTOR
 ADAPTERSTÜCK

Zeiss No	Part No	SWIP order No	
602030-0018	41930-030-0018	503022	

SWIVELING PART WITH OR WITHOUT PIEZO
 DREHSTÜCK UND DREHSTÜCK MIT PIEZO

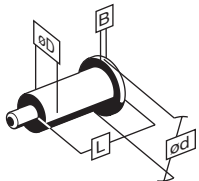
ØD	Zeiss No	Part No	SWIP order No	
--	602030-9095	41930-030-9095	503304	
18	600341-8356	41930-341-8356	503021	
11	602030-8358	41930-030-8358	503650	

CIMAP

13, av. de la Porte de Champerret
75017 PARIS

M5 ZEISS COMPATIBLE

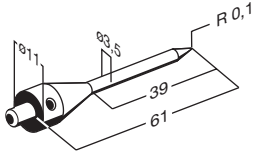
BALL DISC STYLUS
KUGELSCHLEIBEN-TASTER

Ød	L	ØD	B	Material	Zeiss No	Part No	SWIP order No	
10	21,5	7	1,5	SS	600341-8090	41930-341-8090	504423	
15	21,5	10	1,5	SS	600341-8095	41930-341-8095	503406	
15	40	7	1	CE	602030-8092	41990-030-8092	504037	
20	60	7	1	CE	602030-8091	41990-030-8091	504038	

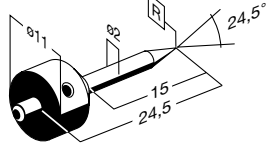
SS = STAINLESS STEEL
SS = NICHTROSTENDER STAHL

CE = CERAMIC
CE = KERAMIK

POINTER STYLUS PUNKTTASTSTIFT

Zeiss No	Part No	SWIP order No	
600342-8051	41995-342-8051	504588	

RUBY POINTER STYLI RUBIN-PUNKTTASTSTIFTE

R	Part Nr.	SWIP order No	
0,01	41994-9082.00A	500755	
0,05	41994-9082.00B	500754	
0,1	41994-9082.00C	500753	

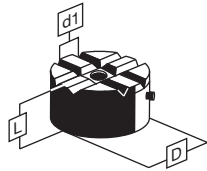


Z-M5-13

Tél. 01.44.29.00.00 - Fax. 01.46.22.26.10

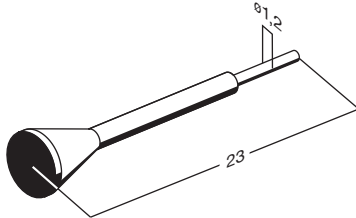
M5 ZEISS
COMPATIBLE
 TOOL FOR STAR STYLJ
 MONTAGEHILFE FÜR STERNTASTER

d1	D	L	Zeiss No	Part No	Swip order No
11	35	50	600341-8300	41942-341-8300	--
19	45	85	600341-8301	41942-341-8301	--



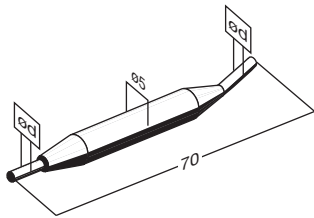
STYLUS TOOLS
 TASTSTIFTWERKZEUGE

Zeiss No	Part No	SWIP order No
602030-0001	41930-030-0001	504285



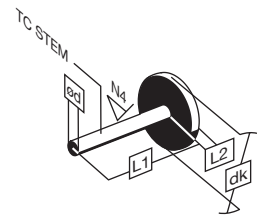
STYLUS TOOLS
 TASTSTIFTWERKZEUGE

Ød	Zeiss No	Part No	SWIP order No
1,7	602030-0027	41930-030-0027	503242
2,9	602030-0222	41930-030-0222	505155



CIMAP**13, av. de la Porte de Champerret
75017 PARIS****M5 ZEISS
COMPATIBLE****RUBY AND CERAMIC DISCS WITH TUNGSTEN CARBIDE STEM
RUBIN UND KERAMIKSCHEIBEN MIT HARTMETALLSCHAFT**

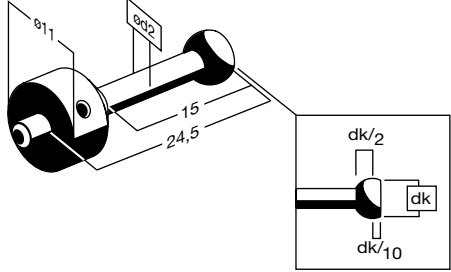
dk	ToI	L1	L2	Ød	Disc material	Sphericity	TC+RU Part No	TC+CE Part No	SWIP Order No	SWIP Order No
3	js3	25	1	1	RU	≤ 0.0005	41988-9071.00	--	500860	--
4	js3	25	1	1	RU	≤ 0.0005	41988-9071.01	--	500861	--
5	js3	25	1	1,5	RU / CE	≤ 0.0005	41988-9071.02	41997-9071.02	500862	500867
6	js3	25	1,5	1,5	RU / CE	≤ 0.0005	41988-9071.03	41998-9071.03	500863	--
8	js3	25	1,5	1,5	RU / CE	≤ 0.0005	41988-9071.04	41997-9071.04	500864	--
10	js3	35	2	2	RU / CE	≤ 0.0005	41988-9071.05	41997-9071.05	500865	500868
12	js3	35	2	2	RU / CE	≤ 0.0005	41988-9071.06	41997-9071.06	500866	500869
14	js3	45	2	3,5	CE	≤ 0.0005	--	41997-9071.07	--	500870
15	js3	45	2,5	3,5	CE	≤ 0.0005	--	41997-9071.08	--	500871
16	js3	55	2,5	3,5	CE	≤ 0.0005	--	41997-9071.09	--	500872
18	js3	55	2,5	3,5	CE	≤ 0.0005	--	41997-9071.10	--	500873
20	js3	65	2,5	8	CE	≤ 0.0005	--	41997-9071.11	--	500874
25	js9	65	2,5	8	CE	≤ 0.005	--	41997-9071.12	--	500875
30	js9	75	3	8	CE	≤ 0.005	--	41997-9071.13	--	500876
40	js9	75	4	8	CE	≤ 0.005	--	41997-9071.14	--	--
50	js9	85	5	8	CE	≤ 0.005	--	41997-9071.15	--	--
60	js9	85	6	8	CE	≤ 0.005	--	41997-9071.16	--	500877

**THE DISCS CAN BE USED WITH DIFFERENT SUPPORTS / DIE SCHEIBEN KÖNNEN MIT VERSCHIEDENEN HALTERN VERWENDET WERDEN****RU: RUBY / RUBIN
CE: CERAMIC / KERAMIK
TC STEM: HARTMETALLSCHAFT**

M5 ZEISS
COMPATIBLE

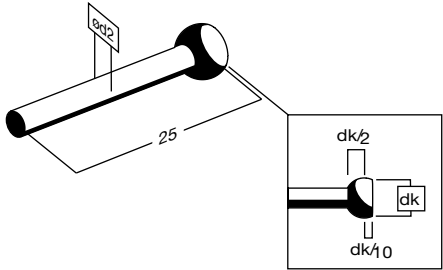
STYLI WITH RUBY BALL AND TUNGSTEN CARBIDE STEM
 TASTSTIFTE MIT RUBINKUGEL UND HARTMETALLSCHAFT

dk	ø d2	Part No	SWIP order No
1.5	1	41992-9085.00A	500762
2	1.5	41992-9085.00B	500761
2.5	1.5	41992-9085.00C	500760
3	2	41992-9085.00D	500759



STYLI WITH RUBY BALL AND TUNGSTEN CARBIDE STEM
 TASTSTIFTE MIT RUBINKUGEL UND HARTMETALLSCHAFT

dk	ø d2	Part No	SWIP order No
1.5	1	41988-9086.00A	500766
2	1.5	41988-9086.00B	500765
2.5	1.5	41988-9086.00C	500764
3	2	41988-9086.00D	500763



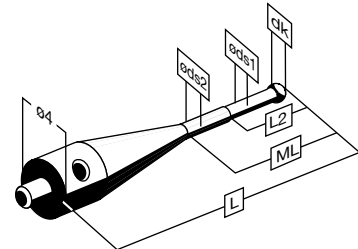
CIMAP

**13, av. de la Porte de Champerret
75017 PARIS**

**M3 ZEISS
COMPATIBLE**

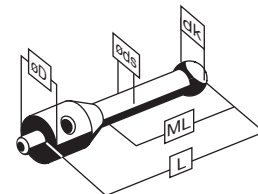
**STYLI WITH RUBY BALL AND TUNGSTEN CARBIDE STEM
TASTSTIFTE MIT RUBINKUGEL UND HARTMETALLSCHAFT**

dk	Øds1	ds2	L2	ML	L	Zeiss No	SWIP order No
0,3	0,2	1	2,3	9	22	602030-8121	504276
0,5	0,3	1	2,5	9	22	602030-8115	500344
0,6	0,4	1	4,6	9	22	602030-8116	504272
0,8	0,6	1	4,8	9	22	602030-8117	504273
1	0,8	1	5	5,5	10,5	602030-8120	504275
1	0,8	1	5	9	22	602030-8118	504343



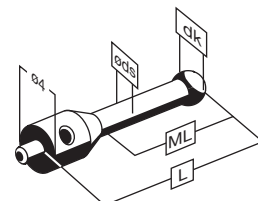
**STYLI WITH RUBY BALL AND TUNGSTEN CARBIDE STEM
TASTSTIFTE MIT RUBINKUGEL UND HARTMETALLSCHAFT**

dk	Øds	ØD	ML	L	Zeiss No	SWIP order No
1,5	1	4	9	22	602030-8119	504274
2	1	4	15	21	602030-8023	504277
2	1	4	9	22	602030-8104	500348
3	1,5	4	15,5	21,5	602030-8021	504279
3	2	4	13	21	602030-8106	504280
3	2	5.5	21,5	40	602030-8113	505288



**STYLI WITH RUBY BALL AND CERAMIC STEM
TASTSTIFTE MIT RUBINKUGEL UND KERAMIKSCHAFT**

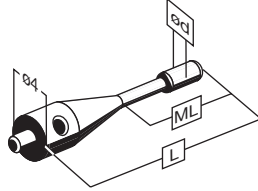
dk	Øds	ML	L	Zeiss No	SWIP order No
4	2	26	32	602030-8102	500373
5	2	19	32	602030-8101	500369
6	2	9	13	602030-8020	504278



M3 ZEISS
COMPATIBLE

CYLINDER STYLI
 ZYLINDER-TASTSTIFTE

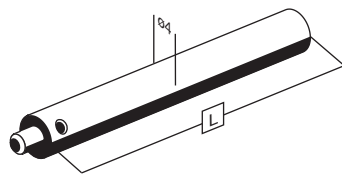
ød	ML	L	Cylinder Material	Zeiss No	SWIP order No
1,5	1,5	11	SS	602030-8097	504367
3	4	13	SS	602030-8099	504366
2	7	20	RU	602030-8107	503189



SS: STAINLESS STEEL / NICHTROSTENDER STAHL
 RU: RUBY / RUBIN

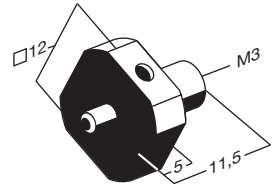
STAINLESS STEEL STYLUS EXTENSIONS
 TASTSTIFTVERLÄNGERUNGEN AUS NICHTROSTENDEM STAHL

L	Zeiss No	SWIP order No
10	602030-8301	500458
20	602030-8302	500377
30	602030-8303	500378
40	602030-8304	500380
50	602030-8305	500381



5-WAYS STYLI CENTRE
 5-WEGE TASTSTIFTHALTER

Zeiss No	SWIP order No
602030-8382	504270



CIMAP

13, av. de la Porte de Champerret
75017 PARIS

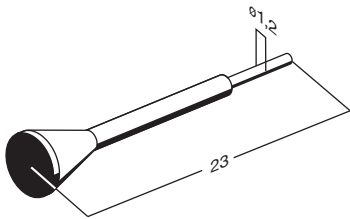
M3 ZEISS
COMPATIBLE
KNUCKLE JOINT
DREHGELENK

Zeiss No	SWIP order No	
602030-9102	504268	

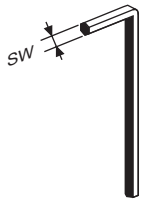
ADAPTOR
ADAPTER

Zeiss No	SWIP order No	
602030-8341	504257	

STYLUS TOOLS
TASTSTIFTWERKZEUGE

Zeiss No	SWIP order No	
602030-0001	504285	

HEXAGON KEY
IMBUS-SCHLÜSSEL

SW	Zeiss No	SWIP order No	
1,5	602030-0002	504237	
2,5	602030-0021	504258	

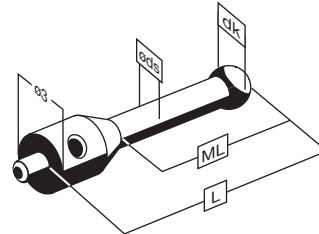
TOOLS SPANNER FOR PROBE
TASTSTIFT-FIXIERUNG

Zeiss No	SWIP order No	
600661-8195	504327	

M2 ZEISS
 COMPATIBLE

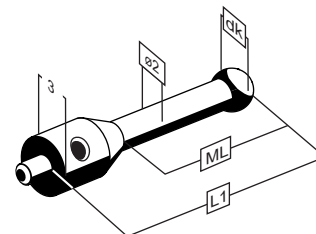
STYLI WITH RUBY BALL AND TUNGSTEN CARBIDE STEM
 TASTSTIFTE MIT RUBINKUGEL UND HARTMETALLSCHAFT

dk	øds	ML	L	Zeiss No	Swip order No
1	0,8	6.5	10,5	602030-8006	500215
1	0,8	11.5	15,5	602030-8007	500214
2	1	5	11	602030-8001	500208
2	1	7	11	602030-8008	504393
2	1	12	16	602030-8009	500207
2	1	15	21	602030-8005	500206
3	1,5	15.5	21,5	602030-8003	504277
4	2,5	8	12	602030-8015	500194
4	2,4	18	22	602030-8016	500193
5	2	16,5	22,5	602030-8034	500188



STYLI WITH RUBY BALL AND CERAMIC STEM
 TASTSTIFTE MIT RUBINKUGEL UND KERAMIKSCHAFT

dk	ML	L	Zeiss No	Swip order No
5	16,5	22,5	602030-8004	500174
6	9	13	602030-8002	500171



CIMAP

13, av. de la Porte de Champerret
75017 PARIS

M2 ZEISS COMPATIBLE

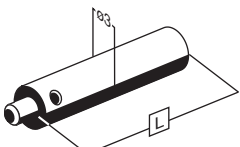
STYLI WITH RUBY BALL AND STAINLESS STEEL STEM
TASTSTIFTE MIT RUBINKUGEL UND SCHAFT AUS NICHTROSTENDEM STAHL

dk	L	Zeiss No	Swip order No
6	13	602030-8017	500184
6	28	602030-8018	500183
8	13	602030-8019	501746



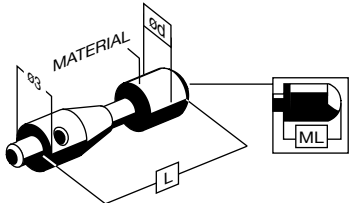
STAINLESS STEEL STYLUS EXTENSIONS TASTSTIFTVERLÄNGERUNGEN AUS NICHTROSTENDEM STAHL

L	Zeiss No	SWIP order No
5	602030-8321	500170
10	602030-8322	500169
20	602030-8323	500168
30	602030-8324	500167
40	602030-8325	500166



CYLINDER STYLI ZYLINDERTASTSTIFTE

Material	Ød	ML	L	Zeiss No	SWIP order No
SS	1.5	1,5	11	602030-8096	500031
SS	3	4	13	602030-8098	500030
RU	2	7,2	20	602030-8100	500027

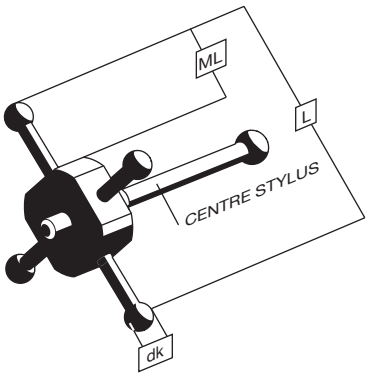


SS: STAINLESS STEEL / NICHTROSTENDER STAHL
RU: RUBY / RUBIN

M2 ZEISS COMPATIBLE

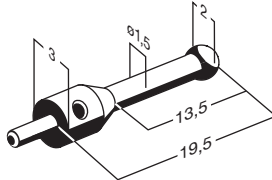
STAR STYLI
STERNFÖRMIGE TASTSTIFTE

dk	ML	L	Zeiss No	SWIP order No
2	8,25	22	602030-8010	502954
2	13,25	32	602030-8011	502955



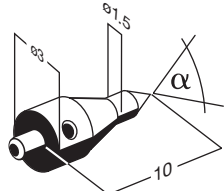
CENTRE STYLUS FOR STAR STYLI
MITTENTASTSTIFT FÜR STERNFÖRMIGE TASTSTIFTE

Zeiss No	SWIP order No
602030-8012	504402



POINTER STYLI
PUNKTTASTSTIFTE

α	Zeiss No	SWIP order No
30°	602030-8342	502493
60°	602030-8343	502494



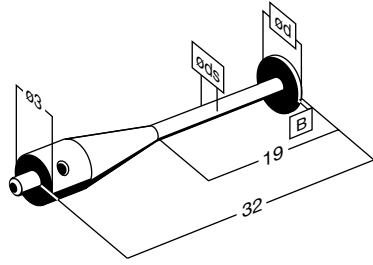
CIMAP

**13, av. de la Porte de Champerret
75017 PARIS**

**M2 ZEISS
COMPATIBLE**

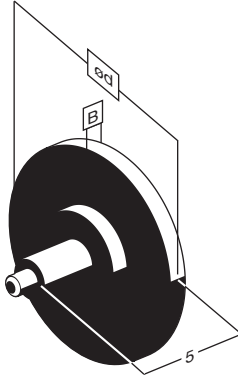
**CERAMIC DISC STYLI
TASTSTIFT MIT KERAMIK-TASTSCHEIBE**

Ød	øds	B	Zeiss No	SWIP order No
4	1	1	602030-8202	504363
8	1.5	1.5	602030-8201	504364



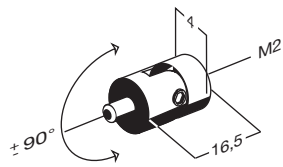
**CERAMIC DISC STYLI
TASTSTIFT MIT KERAMIK-TASTSCHEIBE**

Ød	B	Zeiss No	SWIP order No
14	2	602030-8203	504266
20	2.5	602030-8204	504267

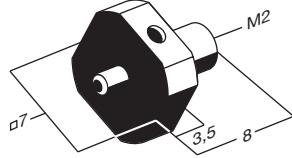


**KNUCKLE JOINT
DREHGELENK**

Zeiss No	SWIP order No
602030-9105	504264



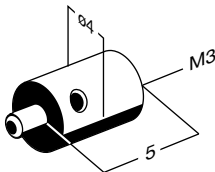
M2 ZEISS
COMPATIBLE
 5-WAYS STYLI CENTRE
 5-WEGE TASTSTIFTHALTER

Zeiss No	SWIP order No	
602030-8381	504271	

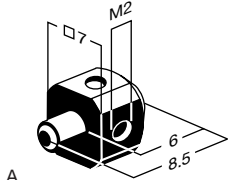
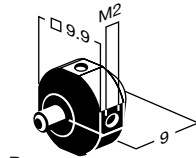
KNUCKLE JOINT
DREHGELENK

Zeiss No	SWIP order No	
602030-9101	504269	

ADAPTOR
ADAPTER

Zeiss No	SWIP order No	
602030-8345	501746	

5-WAYS STYLI HOLDER
5-WEGE TASTSTIFTHALTER

	Zeiss No	SWIP order No	
A	602030-9103	504260	
B	602030-9104	504259	
			

CIMAP
13, av. de la Porte de Champerret
75017 PARIS




SWIP
COMPANY
ADAPTORS

Tél. 01.44.29.00.00 - Fax. 01.46.22.26.10

CIMAP
13, av. de la Porte de Champerret
75017 PARIS



M5-M2

M3-M2

M2-M4

M4-M2

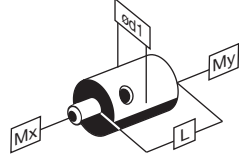


CIMAP

13, av. de la Porte de Champerret
75017 PARIS

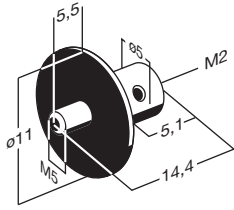
**ADAPTORS
ADAPTER**

Mx	My	Ød1	L	Part No	SWIP order No
M2	M3	4	10	43030-9210.00	500159
M2	M4	5	10	43030-9214.00	500158
M3	M2	4	8	43130-9213.00	500383
M3	M4	5	10	43130-9211.00	500382
M4	M2	5	10	43230-9215.00	500537
M4	M5	6	12	43230-9212.00	500538



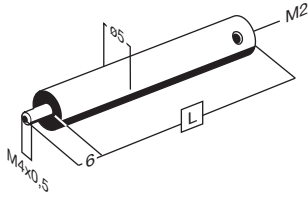
**ADAPTOR
ADAPTER**

Part No	SWIP order No
44030-511470	501555



**ADAPTORS
ADAPTER**

Part No	L	SWIP order No
44030-511430	50	502553
44030-511440	33	502519



CIMAP
13, av. de la Porte de Champerret
75017 PARIS




SWIP
COMPANY
THREADED INSERTS

Tél. 01.44.29.00.00 - Fax. 01.46.22.26.10

CIMAP
13, av. de la Porte de Champerret
75017 PARIS



POSITION

LAGE



THREAD

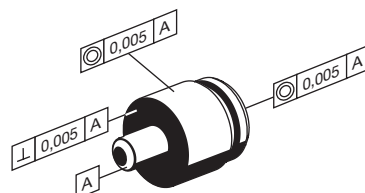
GEWINDE

THREADED INSERTS
GEWINDEEINSÄTZE

d	Part No	SWIP order No	
M2	44030-585012	501623	
M2.5	44030-585016	501624	
M3	44030-585018	501625	
M4	44030-585022	501626	
M5	44030-585026	501627	
M6	44030-585030	501628	
M8	44030-585034	501629	
M10	44030-585040	501630	
M12	44030-585047	501631	
M16	44030-585056	502599	
M20	44030-585065	501632	
M24	44030-585073	501633	

SET OF THREADED INSERTS
GEWINDEEINSÄTZE-SET

Kit	Inhalt/Content Qty	Type	Part No	SWIP order No
A	3	M2	44099-585150	502957
	3	M2.5		
	3	M3		
	3	M4		
	3	M5		
	3	M6		
	3	M8		
	3	M10		
	B	3		
3		M16		
3		M20		
3		M24		



THE SETS ARE PACKED IN SUITABLE BOXES
DIE SETS WERDEN IN GEEIGNETEN KOFFERN ANDELIEFERT

CIMAP
13, av. de la Porte de Champerret
75017 PARIS




SWIP
COMPANY
LEITZ COMPATIBLE

Tél. 01.44.29.00.00 - Fax. 01.46.22.26.10

CIMAP
13, av. de la Porte de Champerret
75017 PARIS

TUNGSTEN CARBIDE STEM
HARTMETALLSCHAFT

CERAMIC DISC
KERAMIK SCHEIBE

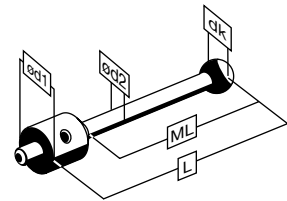
CIMAP

13, av. de la Porte de Champerret
75017 PARIS

M5 LEITZ COMPATIBLE

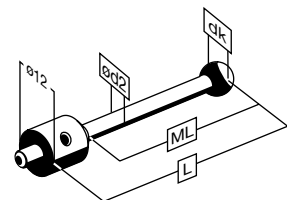
STYLI WITH RUBY BALL AND TUNGSTEN CARBIDE STEM
TASTSTIFTE MIT RUBINKUGEL UND HARTMETALLSCHAFT

dk	Ød1	Ød2	ML	L	Leitz No	Part No	SWIP order No
1,5	12	1	19	40	060-694.150-010	42992-694150.10	501507
2	12	1,5	19	30	060-694.150-007	42992-694150.07	501512
2	12	1,5	24	35	060-694.150-008	42992-694150.08	501513
2	12	1,5	19,5	40	060-694.150-011	42992-694150.11	501506
2	12	1,5	30	41	060-694.150-013	42992-694150.13	501510
2	12	1,5	39,5	60	060-694.150-012	42992-694150.12	501505
3	12	2	24	35	060-694.050	42092-9120.00	501739
3	12	2	39	50	060-694.051	42092-9121.00	501738
3,5	12	3	80	91	060-694.150-005	42992-694150.05	501509
4	12	3	42	55	M00-694.150-017	42992-999-496	502342
5	12	3,5	47	60	060-694.059	42092-9122.00	501737
5	14	3,5	65	80	060-694.052	42092-9126.00	501736
5	12	3,8	67	80	060-694.054	42092-9123.00	501735
8	12	6	72	90	060-694.056	42092-9124.00	501734
8	12	6	107	125	060-694.057	42092-9125.00	501733
8	12	6	158	176	060-694.150-014	42992-694150.14	501508



STYLI WITH RUBY BALL AND CERAMIC STEM TASTSTIFTE MIT RUBINKUGEL UND KERAMIKSCHAFT

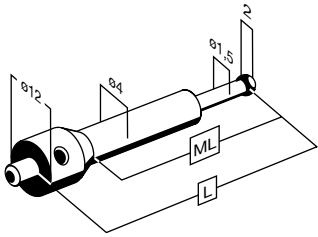
dk	L	ML	Ød2	Leitz No	Part No	SWIP order No
8	125	107	6	060-813.041-000	42091-9125.00	501730
8	90	72	6	060-812.042-000	42091-9124.00	501731
15	90	72	6	M00-694-186-000	42986-694186.05	503359



M5 LEITZ
COMPATIBLE

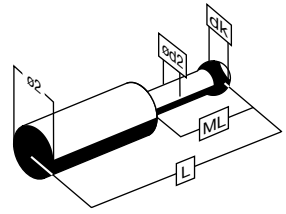
STYLI WITH RUBY BALL AND TUNGSTEN CARBIDE STEM
 TASTSTIFTE MIT RUBINKUGEL UND HARTMETALLSCHAFT

ML	L	Leitz No	Part No	SWIP order No
56	66	060-694.150-006	42992-694150.06	501504
32,5	40	060-694.150-015	42992-694150.15	501503



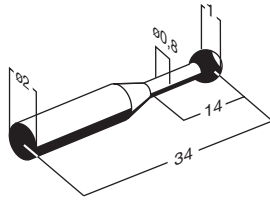
STYLI WITH RUBY BALL AND TUNGSTEN CARBIDE STEM
 TASTSTIFTE MIT RUBINKUGEL UND HARTMETALLSCHAFT

dk	ML	L	ø d2	Leitz No	Part No	SWIP order No
0,3	2	15	0,2	M40-021-810-001	42088-9129.00	501729
0,5	2	15	0,3	M40-021-810-002	42088-9130.00	501728
0,6	4	15	0,4	M02-J01-100-040	42088-9131.00	501727
0,8	4	15	0,6	M40-021-810-004	42088-9132.00	501726
1	4	15	0,8	M40-021-810-005	42088-9133.00	501725
1,5	9,6	22	1,2	060-694.066	42088-9128.00	501724
2	9,6	22	1,5	060-694.065	42088-9127.00	501723



STYLI WITH RUBY BALL AND TUNGSTEN CARBIDE STEM
 TASTSTIFTE MIT RUBINKUGEL UND HARTMETALLSCHAFT

Leitz No	Part No	SWIP order No
060-694.151-009	42988-694151.09	501496



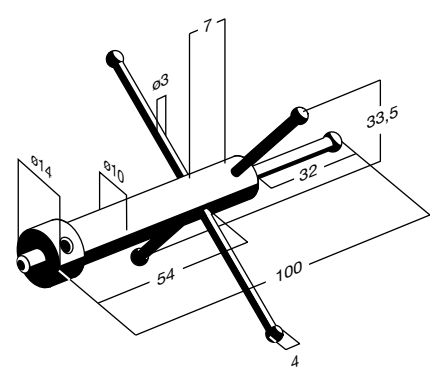
M5 LEITZ
 COMPATIBLE

STYLI WITH RUBY BALL AND TUNGSTEN CARBIDE STEM
 TASTSTIFTE MIT RUBINKUGEL UND HARTMETALLSCHAFT

Leitz No	Part No	SWIP order No	
060-694.151-005	42988-694151.05	501497	
060-694.151-007	42988-694151.07	501489	
060-694.151-006	42988-694151.06	501490	

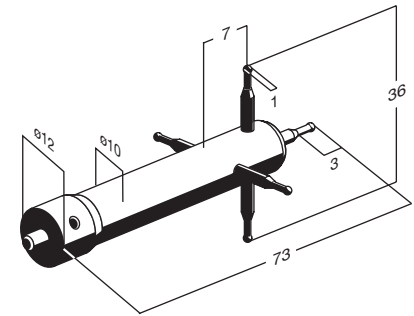
M5 LEITZ
 COMPATIBLE
 STAR STYLUS
 STERNFÖRMIGER TASTSTIFT

Leitz No	Part No	SWIP order No
060-694.011	42092-9110.00	503886



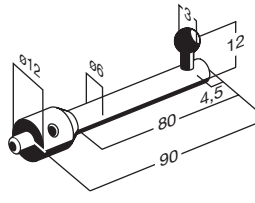
STAR STYLUS
 STERNFÖRMIGER TASTSTIFT

Leitz No	Part No	SWIP order No
060-694.152-007	42992-694152.07	501491



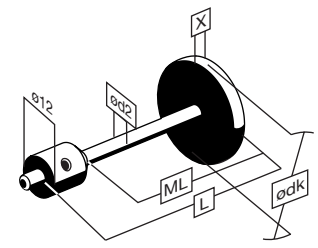
M5 LEITZ
COMPATIBLE
90° ANGLE STYLUS
TASTSTIFT MIT 90° WINKEL

Leitz No	Part No	SWIP order No
060-694.152-006	42992-694152.06	501514



SPHERICAL DISC STYLI
KUGELSCHLEIBENTASTSTIFTE

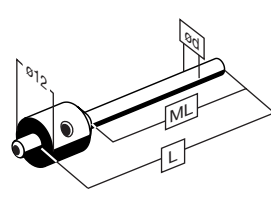
Ødk	L	ML	ød2	x	Material	Part No	Leitz No	SWIP order No
10	46,7	35,7	3	0,7	RU	42992-694152.10	060-694152-010	501493
8	57	46	2,5	1	RU	42992-694152.11	060-694152-011	501492
16	60,5	47,5	3,5	2,5	CE	42986-694152.12	060-694152-012	503237



RU: RUBY / RUBIN
CE: CERAMIC / KERAMIK

STYLI WITH TUNGSTEN CARBIDE STEM
TASTSTIFTE MIT HARTMETALLSCHAFT

Ød	L	ML	Leitz No	Part No	SWIP order No
3	50	39	060-694.152-008	42995-694152.08	501494
5	58	40	060-694.152-009	42995-694152.09	501495





CIMAP
13, av. de la Porte de Champerret
75017 PARIS



SWIP
COMPANY

STYLI FOR INDICATORS

Tél. 01.44.29.00.00 - Fax. 01.46.22.26.10

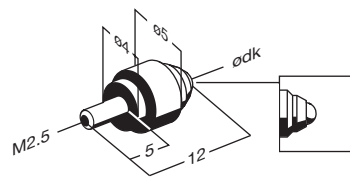
CIMAP
13, av. de la Porte de Champerret
75017 PARIS



PLASTIC
KUMSTOFF
POINT
SPITZE

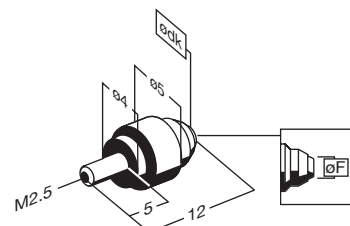
M2.5 INDICATORS
 MESSUHREN
 STYLI FOR INDICATORS
 TASTSTIFTE FÜR MESSUHREN

Ø dk	Ball material	Part No	SWIP order No
2	RU	43694-9000.00	500438
2	PL	43699-9000.00	500439
3	RU	43694-9001.00	500440
3	PL	43699-9001.00	500441
2	TC	43695-9002.00	500457
3	TC	43695-9003.00	500442



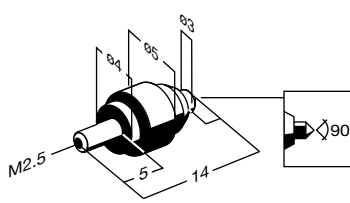
STYLI FOR INDICATORS
TASTSTIFTE FÜR MESSUHREN

Ø dk	Ø F	Ball material	Part No	SWIP order No
2	0,5	RU	43694-9033.00	500445
3	1	RU	43694-9034.00	500446



STYLI FOR INDICATORS
TASTSTIFTE FÜR MESSUHREN

Ball material	Part No	SWIP order No
RU	43694-9036.00	500443
TC	43695-9036.00	500444



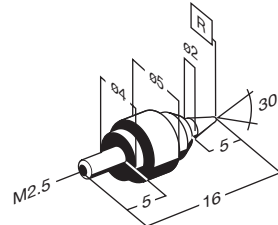
TC: TUNGSTEN CARBIDE / HARTMETALL
RU: RUBY / RUBIN
PL: PLASTIC / KUNSTSTOFF

M2.5 INDICATORS

MESSUHREN

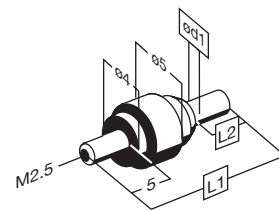
STYLI FOR INDICATORS
 TASTSTIFTE FÜR MESSUHREN

Point material	R	Part No	Swip order No
RU	8,25	43694-9039.00	500437
TC	0,25	43695-9039.00	500436
RU	0,5	43694-9041.00	502760
TC	0,5	43695-9041.00	500435



STYLI FOR INDICATORS TASTSTIFTE FÜR MESSUHREN

Ø d1	L1	L2	Cylinder material	Part No	Swip order No
1	16	5	RU	43694-9043.00	500425
1	16	5	TC	43695-9043.00	500426
1,5	16	5	RU	43694-9045.00	--
1,5	16	5	TC	43695-9045.00	500427
2	18	7	RU	43694-9047.00	500428
2	18	7	TC	43695-9047.00	500429
2,5	19	8	RU	43694-9049.00	500430
2,5	19	8	TC	43695-9049.00	500431
3	19	8	RU	43694-9051.00	500432
3	19	8	TC	43695-9051.00	500433



TC: TUNGSTEN CARBIDE / HARTMETALL
 RU: RUBY / RUBIN
 PL: PLASTIC / KUNSTSTOFF

CIMAP
13, av. de la Porte de Champerret
75017 PARIS



 SWIP
COMPANY
CALIBRATION BALLS

Tél. 01.44.29.00.00 - Fax. 01.46.22.26.10

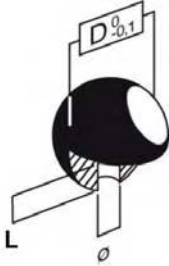
CIMAP
13, av. de la Porte de Champerret
75017 PARIS

CERTIFICATE
ZERTIFIKAT
HIGH QUALITY
HOHE QUALITÄT

THIS SHEET REPLACES THE ENTIRE PAGE 074 OF OUR CATALOGUE
'STYLI AND ACCESSORIES FOR THE METROLOGY'

DIESES BLATT ERSETZT DIE GANZE SEITE 074 UNSERES
KATALOGES 'TASTSTIFTE UND ZUBEHÖR FÜR DIE MESSTECHNIK'

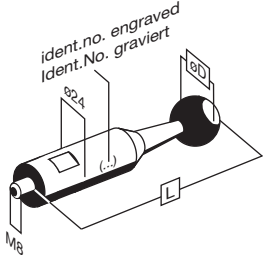
DRILLED CALIBRATION BALLS
GEMOHRTE KALIBRIERKUGELN

D	∅	L	Part No	SWIP order No	
15	4	3.5	32103-9249.15	501952	
20	4	3.5	32103-9249.20	501951	
25	5	8	32103-9249.25	501950	
30	5	8	32103-9249.30	501948	

Measures/Masse in mm.

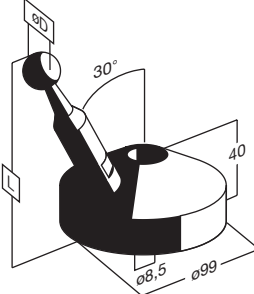
CALIBRATION BALLS
KALIBRIERKUGELN
CALIBRATION BALLS WITH STAND
KALIBRIERKUGELN MIT STÄNDER

Ø D	L	Part No	SWIP order No
15	130	43490-9250.15	502095
20	135	43490-9250.20	501761
25	140	43490-9250.25	501760
30	145	43490-9250.30	501759



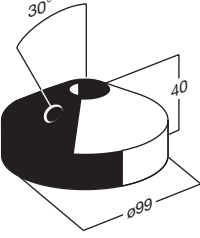
CALIBRATION BALLS
KALIBRIERKUGELN
CALIBRATION BALLS WITH STAND ON SUPPORT BASE
KALIBRIERKUGELN MIT STÄNDER AUF GRUNDPLATTE

Ø D	L	Part No	SWIP order No
15	141	43490-9250.15GP	--
20	146	43490-9250.20GP	--
25	151	43490-9250.25GP	503529
30	156	43490-9250.30GP	503524



CALIBRATION BALLS
KALIBRIERKUGELN
SUPPORT FOR CALIBRATION BALL WITH STAND
GRUNDPLATTE FÜR KALIBRIERKUGEL MIT STÄNDER

Part No	SWIP order No
43430-9250.04	502960



CIMAP
13, av. de la Porte de Champerret
75017 PARIS



SWIP
COMPANY

CUSTOM DESIGNED STYLI

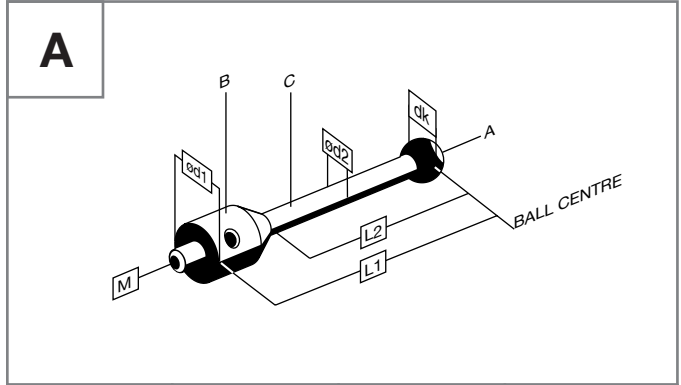
Tél. 01.44.29.00.00 - Fax. 01.46.22.26.10

CIMAP
13, av. de la Porte de Champerret
75017 PARIS



ENQUIRY:

Company:	
Contact person:	
Address:	
E-mail:	
Phone:	
Fax:	



		Pos 1	Pos 2	Pos 3	Pos 4
L1 [mm]					
L2 [mm]	Minimum				
	Maximum				
A	ødk [mm]	1, 1.5, 2, 3, 4, 5, 6, 8 or other			
	Material	Ru, TC, CE, SiN or other			
	Design	A: drilled ball		B: full ball	
B	M	M1.4, M2, M2.5, M3, M4, M5			
	ød1 [mm]	3, 4, 5, 7, 11, 12 or other			
	Material	SS, Ti (only for M5) or other			
C	ød2 [mm]	1, 1.5, 2, 2.5, 3, 3.5, 4, 4.5, 5, 6, 8 or other			
	Material	TC, CE, CFK or other			
Required quantity					
Required shipment					

Ru: Ruby CE: Ceramic TC: Tungsten carbide SiN: Silicon nitride SS: Stainless steel Ti: Titanium CFK: Carbon fiber

QUOTATION:

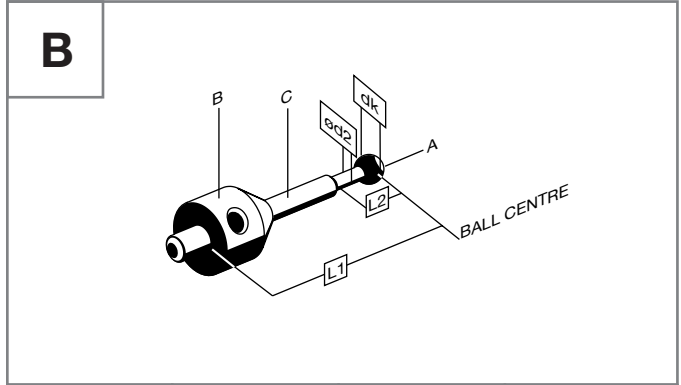
	Pos 1	Pos 2	Pos 3	Pos 4
Price ex works in CHF per piece without packaging, insurance and shipment. Minimum amount CHF 50.- per item and CHF 150.- per order				
Validity of quotation: 2 months after date of issue				

Quotation No: Date: Signature:



ENQUIRY:

Company:	
Contact person:	
Address:	
E-mail:	
Phone:	
Fax:	



		Pos 1	Pos 2	Pos 3	Pos 4
L1 [mm]					
L2 [mm]	Minimum				
	Maximum				
A	ødk [mm]				
	Material				
	Design	A: drilled ball	B: full ball		
B	M				
	ød1 [mm]				
	Material				
C	ød2 [mm]				
	Material				
Required quantity					
Required shipment					

Ru: Ruby CE: Ceramic TC: Tungsten carbide SiN: Silicon nitride SS: Stainless steel Ti: Titanium CFK: Carbon fiber

QUOTATION:

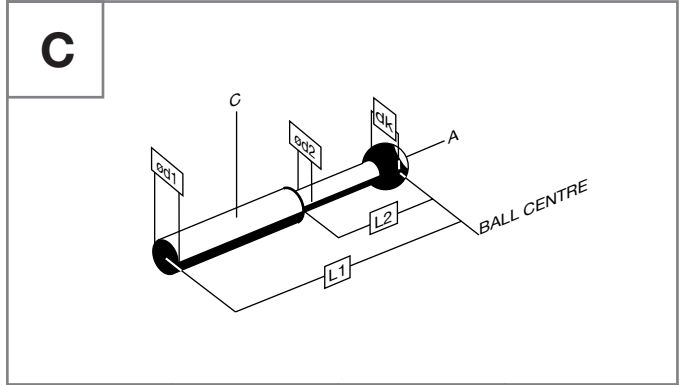
	Pos 1	Pos 2	Pos 3	Pos 4
Price ex works in CHF per piece without packaging, insurance and shipment. Minimum amount CHF 50.- per item and CHF 150.- per order				
Validity of quotation: 2 months after date of issue				

Quotation No: Date: Signature:



ENQUIRY:

Company:	
Contact person:	
Address:	
E-mail:	
Phone:	
Fax:	



		Pos 1	Pos 2	Pos 3	Pos 4
L1 [mm]					
L2 [mm]	Minimum				
	Maximum				
A	ødk [mm]	1, 1.5, 2, 3, 4, 5, 6, 8 or other			
	Material	Ru, TC, CE, SiN or other			
	Design	A: drilled ball		B: full ball	
B	ød1 [mm]	1, 1.5, 2, 2.5, 3, 3.5, 4, 4.5, 5, 6, 8 or other			
	ød2 [mm]	1, 1.5, 2, 2.5, 3, 3.5, 4, 4.5, 5, 6, 8 or other			
	Design	TC, CE, CFK or other			
Required quantity					
Required shipment					

Ru: Ruby CE: Ceramic TC: Tungsten carbide SiN: Silicon nitride SS: Stainless steel Ti: Titanium CFK: Carbon fiber

QUOTATION:

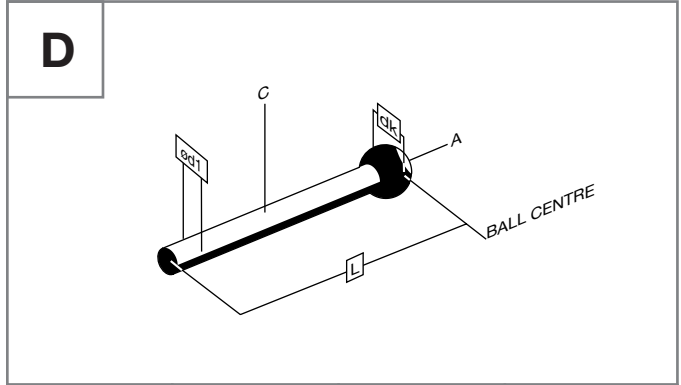
	Pos 1	Pos 2	Pos 3	Pos 4
Price ex works in CHF per piece without packaging, insurance and shipment. Minimum amount CHF 50.- per item and CHF 150.- per order				
Validity of quotation: 2 months after date of issue				

Quotation No:	Date:	Signature:
---------------------	-------------	------------------



ENQUIRY:

Company:	
Contact person:	
Address:	
E-mail:	
Phone:	
Fax:	



		Pos 1	Pos 2	Pos 3	Pos 4
A	L1 [mm]				
	ødk [mm]	1,1.5, 2, 3, 4, 5, 6, 8 or other			
	Material	Ru, TC, CE, SiN or other			
	Design	A: drilled ball		B: full ball	
C	ød1 [mm]	3, 4, 5, 7, 11, 12 or other			
	Material	SS, Ti (only M5) or other			
Required quantity					
Required shipment					

Ru: Ruby CE: Ceramic TC: Tungsten carbide SiN: Silicon nitride SS: Stainless steel Ti: Titanium CFK: Carbon fiber

QUOTATION:

	Pos 1	Pos 2	Pos 3	Pos 4
Price ex works in CHF per piece without packaging, insurance and shipment. Minimum amount CHF 50.- per item and CHF 150.- per order				
Validity of quotation: 2 months after date of issue				

Quotation No:	Date:	Signature:
---------------------	-------------	------------------

